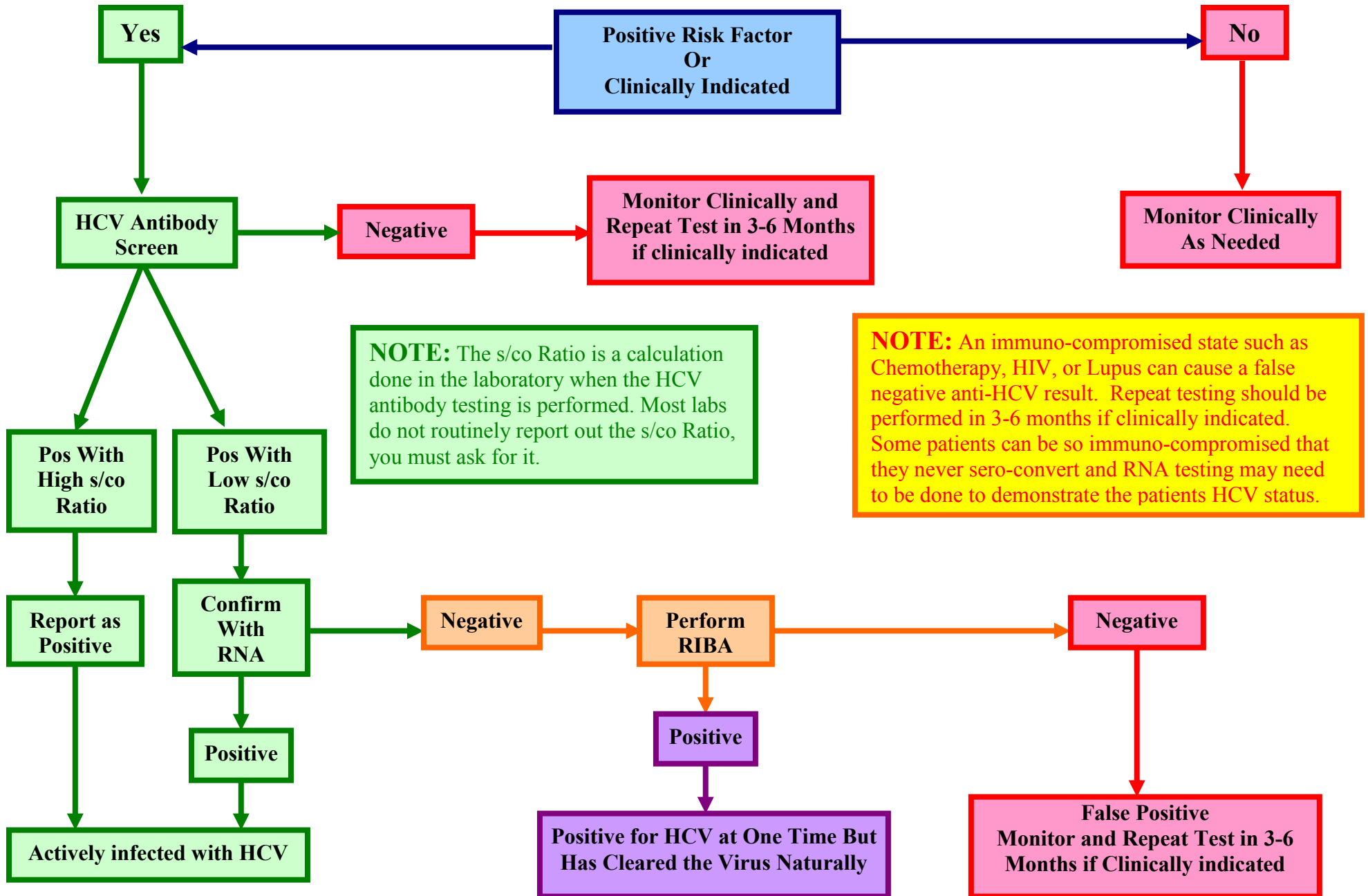


Hepatitis C Testing Flow Chart



**Signal to Cut Off Ratios for Commercially
Available Assays for Detecting Antibody to HCV**

HCV Screening Test Kit	Signal Cut-Off Ratio Predictive of True HCV Positive \geq 95% of the Time
Ortho HCV Version 3.0 ELISA Test System	3.8
Abbott HCV EIA 2.0	3.8
Ortho Vitros Anti-HCV Assay	8.0
Abbott AxSYM Antibody to HCV	10.0
Bayer Advia Centaur HCV Assay	Not Yet Available

Signal-to-cut--off ratios are calculated by dividing the optical density (OD) value of the sample being tested by the OD value of the assay cut-off for that run. Analysis of enzyme immunoassay and chemiluminescence assay data indicates that s/co ratios can be used to predict supplemental test-positive results. A specific s/co ratio can be identified for each test that would predict a true antibody-positive result (as defined by the results of supplemental testing) \geq 95% of the time, regardless of the anti-HCV prevalence or characteristics of the population being tested.

Reference:

All information presented in these pages and all items available for download are for public use.
Division of Viral Hepatitis, Centers for Disease Control and Prevention, National Center for Infectious Diseases, (888)443-7232